



Hampton Park Primary School

Newsletter

26th July 2024

Persistence, Creativity & Excellence

Address: 32 Somerville Road, Hampton Park VIC 3976

Website: <http://www.hpps.vic.edu.au>

Email: hampton.park.ps@education.vic.gov.au

Phone: 9799 1440

Calendar:

- **Friday 26th July - Whole school assembly - 2.45pm**
- **Tuesday 30th July - Gr 1/2 Chesterfield Farm Excursion**
- **Tuesday 30th July - Foundation 100 days of School**
- **Wednesday 30th July - FA - Semester 1 Parent Teacher Meetings 2.30-6.00pm**
- **Friday 2nd August - Interschool Sport 5/6's - St.Francis P.S**
- **Monday 5th August - PUPIL FREE DAY - **NO SCHOOL FOR STUDENTS****

Hello HPPS community,

I'm thrilled to be back at Hampton Park Primary School while Principal Mills is on leave. It's been wonderful visiting classes, joining in on activities like colouring, art, floor time, reading, and even working on fractions! I've also enjoyed attending meetings and planning sessions, and I'm grateful for the warm welcome I've received from staff, students, and families at the school gates.

A special thank you to the families who allowed me to sit in on their parent-teacher meetings last week. It was inspiring to hear about the amazing learning and growth our students have achieved. A big THANK YOU to the staff who facilitated these conversations and the families who attended.

Looking forward to more great moments together!

Kind regards,

Sharne Winstone
Acting Principal

Respect, Best Effort, Friendliness, Co-operation, Equality.

Newsletter online at <http://www.hpps.vic.edu.au> and follow the newsletter link

Dear Families

We are very excited to announce that the School Concert 2024 is being scheduled over two nights, Monday 9th and Tuesday 10th of September, commencing at 6:00pm. The Concert will be held at the River Gum Performing Arts Centre (RPAC), 58 Fordholm Road, Hampton Park. All students will need to be at RPAC at 5:30pm.

To ensure that we can accommodate all families that wish to attend the concert. Children will be assigned a performance night, based on their Surname as follows:

- **Students with surnames starting with A to L perform on the Monday 9 September only.**
- **Students with surnames from M to Z perform on Tuesday 10 September only.**
- **Siblings with different surnames perform on the Tuesday 10 September.**

Parents and family members are requested to attend only on the night your children are scheduled to perform and be seated by 5.45pm. Over the coming weeks, further information regarding the concert will be communicated by me and your child's classroom teacher.

Should you have any questions regarding this year's concert, please do not hesitate to contact me at the school.

Thank you

Judith Brambleby

Performing Arts Teacher

GOLD Assembly Awards — P-2 Peer Leadership Award



GOLD Assembly Awards — 3-6 Peer Leadership Award



GOLD Assembly Awards — Specialist Peer Leadership Award



GOLD Assembly Awards — P-2 Academic Excellence Award



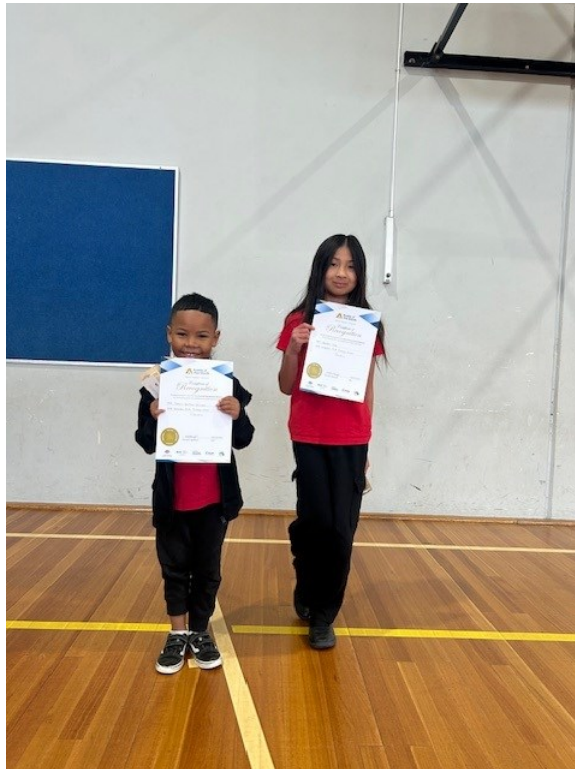
GOLD Assembly Awards — 3-6 Academic Excellence Award



GOLD Assembly Awards — Specialist Academic Excellence Award



GOLD Assembly Awards — Aussie of the Month



Hampton Park Chess Coaching Tournament

Throughout Term 2, some of our chess students participated in chess coaching on Wednesdays. Each week, students learnt new techniques and practised them in a weekly competition. The students were split into two groups. Congratulations to Jannifer and Segalue, who won gold, Berks and TJ, who won



School starts
at

8:50am



EVERY MINUTE COUNTS

Just a little bit late doesn't seem much but.....

| He/She is only missing just.... | That equals.... | Which is.... | over 13 years of schooling, that's.... |
|---------------------------------|----------------------------|---------------------------|--|
| 10 minutes per day | 50 minutes per week | Nearly 1.5 weeks per year | Nearly HALF A YEAR |
| 20 minutes per day | 1 hour 40 minutes per week | Nearly 2.5 weeks per year | Nearly 1 YEAR |
| Half an hour per day | Half a day per week | 4 weeks per year | Nearly 1 AND A HALF YEARS |
| 1 hour per day | 1 day per week | 8 weeks per year | Nearly 2 AND A HALF YEARS |



Did you know your child's best learning time is the start of the school day?



That's when every minute counts the most!



HAMPTON PARK
PRIMARY SCHOOL

Enrol now for 2025!

We are now taking enrolments for prep students, and families moving in to our school zone, in 2025.

If your child will be beginning school next year, or you would like more information, please contact us today by calling, emailing us or visiting our school website.

www.hpps.vic.edu.au

hampton.park.ps@education.vic.gov.au



9799 1440

School Tours

We welcome families to join us for a school tour to see our wonderful school in action. These will run on Wednesday mornings at 9:30am.

To book a place on a tour, please use the form on our website or contact our office.



GET STARTED WITH NETBALL



IF NETBALL IS FOR YOU, LET'S GET YOU STARTED WITH SOME FURTHER SKILLS SESSIONS & PROGRAMS FROM YOU LOCAL NETBALL ASSOCIATION - CASEY

LITTLE NETTERS

FOR PRE-SCHOOL AGED BOYS AND GIRLS
THURSDAY @ STADIUM, CRANBOURNE EAST.
 SIGN UP AT CASEYNETBALL.COM OR
 EMAIL TEAGAN@CASEYNETBALL.COM.AU PH:5995 0688



FOR BOYS & GIRLS AGED 5-7 YEARS.
MONDAY @ STADIUM, CRANBOURNE EAST.
FRIDAY @ OLIVE ROAD SPORTING COMPLEX, EUMEMMERRING.
SATURDAY @ CASEY STADIUM, CRANBOURNE EAST.
 SIGN UP AT CASEYNETBALL.COM OR FOR ALL NET SET GO ENQUIRES
 EMAIL TEAGAN@CASEYNETBALL.COM.AU PH:5995 0688



FOR BOYS & GIRLS AGED 8-14 YEARS THAT HAVE NEVER PLAYED NETBALL BEFORE.
MONDAY CASEY STADIUM, CRANBOURNE EAST.
FRIDAY @ OLIVE ROAD SPORTING COMPLEX
SATURDAY @ CASEY STADIUM, CRANBOURNE EAST.
 SIGN UP AT CASEYNETBALL.COM OR FOR ALL NEW 2 NETBALL ENQUIRES
 EMAIL DANIELLE@CASEYNETBALL.COM.AU PH:5995 0688

JOIN A NETBALL TEAM

SCAN THE QR CODE TO JOIN THE 'CASEY NETBALL PLAYER TEAM ADVERTISEMENTS PAGE ON FACEBOOK. POST AN AD AND CLUBS WITHIN OUR ASSOCIATION WILL SEE YOUR EXPRESSION OF INTEREST.

MONDAY NETTA, YOUTH MIXED, SENIOR LADIES
WEDNESDAY JUNIOR NETTA, 11&U, 13&U, 15&U AND 17&U. SENIOR MIXED
SATURDAY JUNIOR NETTA, 11&U, 13&U, 15&U AND 17&U*

VISIT CASEYNETBALL.COM FOR A FULL LIST OF NETBALL CLUBS THAT PLAY HERE AT CASEY STADIUM.





Community Hub

Hampton Park PS - 32 Somerville Road, Hampton Park

The Hampton Park Community Hub is meeting place for our whole community. We welcome all families in our community to come along to connect, share and learn with us. Our programs include:



**Little Owls
Playgroup**
with Hey De Ho Music



Beginner and
Intermediate &
Advanced English
Classes

**Beginner
Computer
Classes**



Coffee and Chat...

Enjoy a coffee and come
and meet new friends

Coming Soon... An after school AFL program for the whole family
Register now for Term 3 Pre accredited Citizenship Classes

Our Community Hub proudly partners with the following organisations to support the Hampton Park Community.



For more
information
contact Linda



9799 1440
0412 978 364



HAMPTON PARK PRIMARY SCHOOL COMMUNITY HUB

**Limited places are available for
Beginner and Intermediate English
classes.**

Computer classes



All enquiries to Linda

on 9799 1440 or 0412978364



Hampton Park TheirCare Newsletter

The holiday program that was....

Our July holiday program has been our most successful holiday to date.

Our highest percentage of Hampton park children attending since we opened our doors, getting as high as 35 bookings, and averaging 25 children.

During the holidays we got up to heaps of fun, we went bowling, mini golf, to inflatable world, saw the amazing inside out 2, made heaps of slime, lots and lots of craft, science experiments, lots of favourite group games, and learnt many new ones.



Calendar

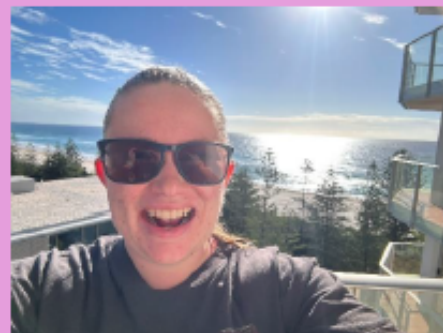
Week 2: 22nd-26th July: Mystery Box Week

Week 3: 29th-3rd August: Thankfulness Week

31st July: OSHC educators day

Week 4: 5th-9th August: Beautiful Week

5th August: Fun and Slime Filled Pupil Free day



New Operating hours

As of Monday 15th July, we now open our doors for before school care at 6:45am

Operating hours

BSC: 6:45-8:50am
ASC: 3:20-6:30pm
PFD: 6:45-6:30pm
HP: 6:30-6:30pm

Hey, my name is Rebekah, and im the coordinator, I would love to meet you, come drop in or contact the service

Contact the service

Phone: 0417 100 227

Email: hamptonpark@theircare.com.au

For all payment and accounts enquires

Phone: [1300 072 410](tel:1300072410)

Email: info@theircare.com.au



Term 3 2024

Keep this handy calendar on your fridge for upcoming events at Hampton Park PS. For updates remember to check out Sentral or Facebook.

| | Monday | Tuesday | Wednesday | Thursday | Friday |
|--------------------|---|---|---|---|---|
| July | 15 | 16 | 17 | 18 | 19 |
| | NAIDOC WEEK | | | | |
| | | | | Parent - Teacher Conferences 2:30 - 7:30pm | Little Owls Playgroup @ 9:00am |
| | 22 | 23 | 24 | 25 | 26 |
| | | | | Little Owls Playgroup @ 9:00am | Assembly - 2:45pm |
| August | 29 | 30 | 31 | 01 | 02 |
| | | Foundation 100 Days of School Grade 1/2 Excursion to Chesterfield Farm | 2C Parent - Teacher Conferences 2:30 - 6:00pm | Little Owls Playgroup @ 9:00am | Grade 5/6 Interschool Sports |
| | 05 | 06 | 07 | 08 | 09 |
| | Pupil Free Day No School | | | Little Owls Playgroup @ 9:00am School Council @ 3:50pm | Grade 5/6 Interschool Sports Assembly - 2:45pm |
| | 12 | 13 | 14 | 15 | 16 |
| Grade 5/6 Swimming | | | | | |
| Grade 1/2 Swimming | | | Little Owls Playgroup @ 9:00am | Bullying: No Way! Day | |
| 19 | 20 | 21 | 22 | 23 | |
| | Chess Regional Finals | District Athletics | Little Owls Playgroup @ 9:00am Book Week Parade and Dress Up Day | Grade 5/6 Interschool Sports Assembly - 2:45pm | |
| 26 | 27 | 28 | 29 | 30 | |
| | Grade 5/6 Mini Olympics Incursion | | Little Owls Playgroup @ 9:00am | Grade 5/6 Interschool Sports Fathers Day Picnic - 2:45pm | |
| September | 02 | 03 | 04 | 05 | 06 |
| | | | | Little Owls Playgroup @ 9:00am | Assembly - 2:45pm |
| | 09 | 10 | 11 | 12 | 13 |
| | School Concert Night One 7pm @ Rivergum PAC | School Concert Night Two 7pm @ Rivergum PAC | Grade 5/6 Lightning Premiership | Little Owls Playgroup @ 9:00am School Council @ 3:50pm | |
| | 16 | 17 | 18 | 19 | 20 |
| | | Foundation Excursion to Enchanted Adventure | Little Owls Playgroup @ 9:00am | Gold Assembly 9:10am Last day of term 2:30pm finish | |



We are proud to acknowledge the Bunurong People as the traditional owners and custodians of the land on which Hampton Park Primary School is located. We pay our respects to Elders past, present and emerging.

9799 1440

www.hpps.vic.edu.au

